

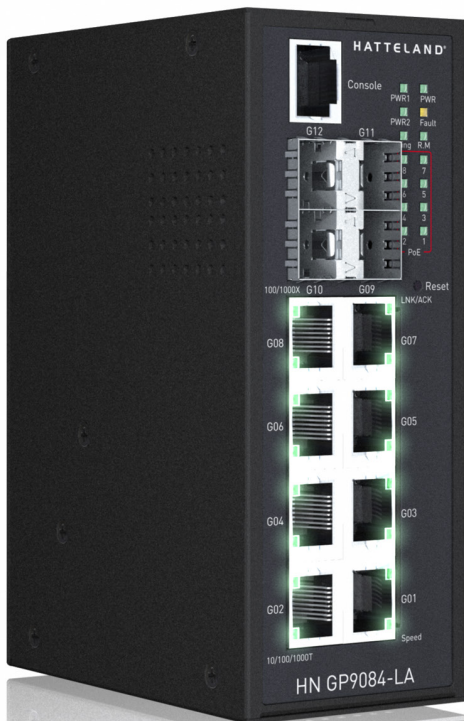
# DATA SHEET

Manufacturer: Hatteland Technology AS  
 Product: Industrial Ethernet Switch  
 Type: HN GP9084-LA

**i** Dimensions might be shown with or without decimals and indicated as mm [inches]. Tolerance on drawings is +/- 1mm. For accurate measurements, check relevant DWG file.

## HN GP9084-LA - Industrial Ethernet Switch

The HATTELAND® industrial range of high quality reliable Network Switches can be used in connecting several Ethernet devices like Ethernet I/O, IP-Camera or other Ethernet switches. The HN G9084-LA is a slim type managed Ethernet switch with 8x10/100/1000Base-T(X) ports and 4x100/1000Base-X SFP ports. The switch supports Ethernet Redundancy protocol, recovery time < 20ms over 250 units of connection and MSTP (RSTP/STP compatible) can protect your mission-critical applications from network interruptions or temporary malfunctions with its fast recovery technology.



**IP 30**  
 Protection against Tools, thick wires, etc.



**Gigabit Ethernet switch**



**5 Years Warranty**



**PoE Ethernet switch**

## Technology

- MAC Table: 8192 MAC addresses
- Priority Queues: 8
- Processing: Store-and-Forward
- Share Data Buffer: 4Mbit
- Jumbo frame: Up to 9.6k bytes
- PoE Power Supply Type: Endspan mode
- PoE Power Output:
  - Per port 56V DC
  - 350mA. Max. 15.4 watts (IEEE 802.3af)
  - 590mA. Max. 30 watts (IEEE 802.3at)
- Software Features:
  - STP/RSTP/MSTP (IEEE 802.1D/w/s)
  - Redundant Ring (O-Ring) recovery time > 20ms (Fast Ethernet), recovery time > 30 ms (1 Gigabit)
  - TOS/DiffServ supported
  - Quality of Service (802.1p) for real-time traffic
  - VLAN (802.1Q) with VLAN tagging
  - IGMP Snooping
  - IP-based bandwidth management
  - Application-based QoS management
  - DOS/DDOS auto prevention
  - Port configuration, status, statistics, monitoring, security
  - DHCP Server/Client/Relay
  - SMTP Client
  - Modbus TCP, Ethernet/IP™
  - NTP server
- Switch Properties:
  - Switching latency: 7 us
  - Switching bandwidth: 24Gbps
  - Throughput (packet per second): 17.856Mpps@64Bytes packet
  - Max. Number of Available VLANs: 4096
  - VLAN ID Range: VID 0 to 4095
  - IGMP multicast groups: 256 for each VLAN
  - Port rate limiting: User Define
- Security Features:
  - Device Binding security feature
  - Enable/disable ports
  - MAC based port security
  - Port based network access control (802.1x)
  - VLAN (802.1Q ) to segregate and secure network traffic
  - Radius centralized password management
  - SNMPv3 encrypted authentication and access security
  - Https / SSH enhance network security
- Network Redundancy:
  - O-Ring
  - O-Chain
  - MRP (Media Redundancy Protocol)<sup>[1]</sup>
  - MSTP (RSTP/STP compatible)

<sup>[1]</sup>This function is available by request only

**i** All specifications are subject to change without prior notice! Please visit [www.hattelandtechnology.com](http://www.hattelandtechnology.com) for the latest electronic version.

## Technology

- RS-232 Serial Console Port:
  - RS-232 in RJ45 connector with console cable
  - 115200bps, 8, N, 1
- Ethernet Standards:
  - IEEE 802.3 for 10Base-T
  - IEEE 802.3u for 100Base-TX and 100Base-FX
  - IEEE 802.3ab for 1000Base-T
  - IEEE 802.3z for 1000Base-X
  - IEEE 802.3x for Flow control
  - IEEE 802.3ad for LACP
  - IEEE 802.1p for COS
  - IEEE 802.1Q for VLAN Tagging
  - IEEE 802.1D for STP
  - IEEE 802.1w for RSTP
  - IEEE 802.1s for MSTP
  - IEEE 802.1x for Authentication
  - IEEE 802.1AB for LLDP
  - IEEE 802.3at PoE specification

## Physical Characteristics

- Enclosure: IP30
- Dimensions: W:108.30 [4.26"] x H:145.10 [5.71"] x D:108.30 [4.26"] mm [inch]
- Weight: 779g

## Physical Ports and Controls

- DIP - Switch
- LED Indicators
- 4 x 100/1000Base-X with SFP port
- 8 x 10/100/1000Base-T(X) with PoE Ports in RJ45 Auto MDI/MDIX
- Relay output to carry capacity of 1A at 24VDC

## Power Specifications

- Redundant Input power: Dual DC inputs. 50 - 57VDC on 6-pin terminal block.
- Power consumption (Typ.): 13,2 Watts
- PoE Budget: 1 port max 30W, total max 240W
- Overload current protection: Present
- Reverse polarity protection: Present

## Additional Specifications

- MTBF 516416 hours
- Warranty 5 years

## Available Accessories

• SDR-120-48	1 x Power supply 48 VDC, 2.5A, 6-pin Terminal Block 5.08, Type Approved <sup>[2]</sup> : DNV
• SDR-240-48	1 x Power supply 48 VDC, 5A, 6-pin Terminal Block 5.08, <sup>[2]</sup>
• SDR-480-48	1 x Power supply 48 VDC, 10A, 6-pin Terminal Block 5.08, Type Approved <sup>[2]</sup> : DNV
• HN SFP1G-LX10	1 x 1Gbps SFP optical transceiver, single-mode / 10km, 1310nm, -40 ~ +75°C
• HN SFP1G-SX	1 x 1Gbps SFP optical transceiver, multi-mode / 550m, 850nm, -40 ~ +75°C
• HN SFP1G-RJ	1 x 1Gbps SFP to 1000 Base-T transceiver, -40 ~ +75°C

<sup>[2]</sup>Note: CCS - China Classification Society: Network switches and related power supplies are not required to be Type Approved.

## Contents of Package

- 1 X HN G9812
- 1 X Wall-Mount Kit :2 X Wall-Mount Plate  
:6 X screw
- 1 X 6-Pin Terminal block
- 8 X Dust Cover
- 1 X Console Cable
- 1 X Quick Installation Guide
- 1 X DIN-Rail kit / Factory Mounted

### Maritime:

#### - Environment Specification

- Storage Temperature: -40 to 85°C (-40 to 185°F)
- Operating Temperature: -15 to +55°C (5 to 131°F)
- Operating Humidity: 5% to 95% Non-condensing
- Air Pressure Maximum Altitude: Operating: 4000m - Storage: 12912m
- Compass Safe Distance: Standard: 30cm - Steering: 15cm

#### - Regulatory approvals

- EMC: CE EMC (EN55024, EN 55032)
- EMI: EN55032
- EMS: EN55024 (IEC/EN 61000-4-2 (ESD), IEC/EN 61000-4-3 (RS), IEC/EN 61000-4-4 (EFT), IEC/EN61000-4-5 (Surge), IEC/EN 61000-4-6 (CS), IEC/EN 61000-4-8 (PFMF), IEC/EN 61000-4-11 (DIP))
- Shock: IEC60068-2-27
- Vibration: IEC60068-2-6
- Safety: EN62368-1 compliant

#### - Type Approvals

These products have been tested / type approved by the following classification societies:  
**IEC 60945 4th** (EN 60945:2002), **IACS E10**  
**DNV** - Det Norske Veritas, **KR** - Korean Register of Shipping  
**ClassNK** - Nippon Kaiji Kyokai, **BV** - Bureau Veritas  
**CCS** - China Classification Society, **LRS** - Lloyd's Register of Shipping

### Industrial:

#### - Environment Specification

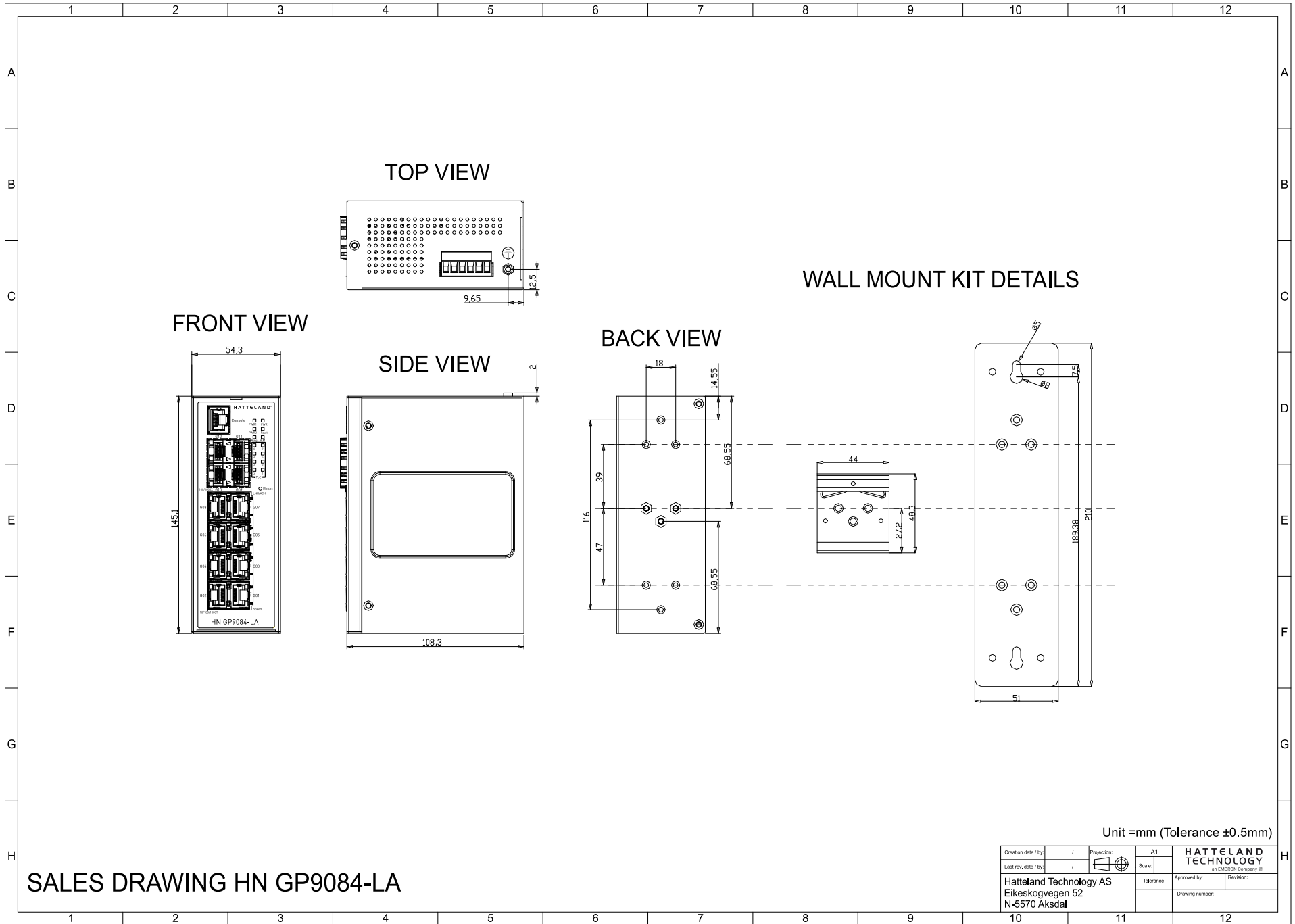
- Storage Temperature: -40 to 85°C (-40 to 185°F)
- Operating Temperature: -40 to +75°C (-40 to 167°F)
- Operating Humidity: 5% to 95% Non-condensing

#### - Regulatory approvals

- EMC: CE EMC (EN 55024, EN 55032), FCC Part 15B
- EMI: EN55032, CISPR32, EN 61000-3-2, EN 61000-3-3, FCC Part 15B class A
- EMS: EN 55024 (IEC/EN 61000-4-2 (ESD:Contact 8KV, Air 10KV), IEC/EN 61000-4-3(RS), IEC/EN 61000-4-4 (EFTPower 2KV, Single 2KV), IEC/EN 61000-4-5 (Surge:Power 4KV, RJ45 4KV), IEC/EN 61000-4-6 (CS), IEC/EN 61000-4-8(PFMF), IEC/EN 61000-4-11 (DIP))
- Shock: IEC60068-2-27
- Free Fall: IEC60068-2-31
- Vibration: IEC60068-2-6
- Safety: EN62368-1 compliant

 All specifications are subject to change without prior notice! Please visit [www.hattelandtechnology.com](http://www.hattelandtechnology.com) for the latest electronic version.

**i** Dimensions might be shown with or without decimals and indicated as mm [inches]. Tolerance on drawings is +/- 1mm. For accurate measurements, check relevant DWG file.



**SALES DRAWING HN GP9084-LA**